

# PHOTOFRIN® (porfimer sodium) for Injection

## CASE STUDY: Non-operative obstructive squamous cell carcinoma of the right lower lobe bronchus

Courtesy of Harmik J. Soukiasian, MD, FACS  
Chief, Division of Thoracic Surgery  
Cedars-Sinai Medical Center

### PHOTOFRIN® (porfimer sodium) IS INDICATED FOR

Palliation of patients with completely obstructing esophageal cancer, or of patients with partially obstructing esophageal cancer who, in the opinion of their physician, cannot be satisfactorily treated with Nd:YAG laser therapy.

Treatment of microinvasive endobronchial non-small cell lung cancer (NSCLC) in patients for whom surgery and radiotherapy are not indicated.

Reduction of obstruction and palliation of symptoms in patients with completely or partially obstructing endobronchial NSCLC.

PHOTOFRIN® (porfimer sodium) is indicated for the ablation of high-grade dysplasia (HGD) in Barrett's esophagus patients who do not undergo esophagectomy.

### IMPORTANT SAFETY INFORMATION ABOUT PHOTOFRIN FOR INJECTION

Photodynamic therapy (PDT) with PHOTOFRIN is a two-stage process requiring administration of both drug and light in a properly equipped facility. Refer to the OPTIGUIDE® instructions for use for complete instructions concerning the fiber optic diffuser.

PHOTOFRIN is contraindicated in patients with porphyria. PDT is contraindicated in patients with an existing tracheoesophageal or bronchoesophageal fistula and patients with tumors eroding into a major blood vessel. PDT is not suitable for emergency treatment of patients with severe acute respiratory distress caused by an obstructing endobronchial lesion because 40 to 50 hours are required between injection with PHOTOFRIN and laser light treatment. PDT is not suitable for patients with esophageal or gastric varices, or patients with esophageal ulcers >1 cm in diameter. Tracheoesophageal or bronchoesophageal fistula can occur if esophageal tumor is eroding into trachea or bronchial tree. Gastrointestinal perforation can occur. There is a high risk of bleeding in patients with esophageal varices and for fatal massive hemoptysis with endobronchial tumors that are: large, centrally located; cavitating; extensive, extrinsic to the bronchus. After treatment of high-grade dysplasia (HGD) in Barrett's esophagus (BE), monitor endoscopic biopsy every three months, until four consecutive negative evaluations for HGD have been recorded. Photosensitivity can be expected; ocular sensitivity is possible. Allow 2-4 weeks between PDT and subsequent radiotherapy. Substernal chest pain may occur after treatment. Treatment-induced inflammation can cause airway obstruction. Administer with caution to patients with tumors in locations where treatment-induced inflammation can obstruct the main airway. Esophageal stenosis occurs frequently after treatment of HGD in BE. Patients with hepatic or renal impairment may need longer precautionary measures for photosensitivity (possibly more than 90 days). Thromboembolic events can occur following photodynamic therapy with PHOTOFRIN.

**MOST COMMON ADVERSE REACTIONS** reported during clinical trials are:

**Esophageal Cancer:** Anemia, pleural effusion, pyrexia, constipation, nausea, chest pain, pain, abdominal pain, dyspnea, photosensitivity reaction, pneumonia, vomiting, insomnia, back pain, pharyngitis.

**Obstructing Endobronchial Cancer:** Dyspnea, photosensitivity reaction, hemoptysis, pyrexia, cough, pneumonia.

**Superficial Endobronchial Tumors:** Exudate, photosensitivity reaction, bronchial obstruction, edema, bronchostenosis.

**High-Grade Dysplasia in Barrett's Esophagus:** Photosensitivity reaction, esophageal stenosis, vomiting, chest pain, nausea, pyrexia, constipation, dysphagia, abdominal pain, pleural effusion, dehydration.

Inform patients to report adverse reactions. All patients who receive PHOTOFRIN will be photosensitive for at least 30 days and should be warned about this and counselled to take appropriate precautions. Laser treatment should not be given if an overdose of PHOTOFRIN is administered.

**FOR MORE INFORMATION ABOUT PHOTOFRIN** visit [www.Photofrin.com](http://www.Photofrin.com) or call Concordia Laboratories Inc. at 1-877-370-1142.

You are encouraged to report negative side effects of prescription drugs to the FDA. Visit [www.fda.gov/medwatch](http://www.fda.gov/medwatch), or call 1-800-FDA-1088.

Please see full prescribing information for PHOTOFRIN.



## PATIENT HISTORY

This 58-year-old female presented with multiple comorbidities significant for coronary artery disease, a history of myocardial infarction status post coronary artery bypass graft (CABG), multiple stents, and severe chronic obstructive pulmonary disease (COPD). She had initially been admitted for pneumonia and was later found to have a large obstructive lesion in the right bronchus intermedius that was biopsied as squamous cell carcinoma upon bronchoscopy. Her workup included PET scan, brain scan, and endobronchial ultrasound (EBUS), which showed a negative mediastinum. The patient was deemed a poor surgical candidate because of her diffusing capacity of the lungs for carbon monoxide (DLCO) of 32%. She continued to have shortness of breath despite receiving IV antibiotics for her pneumonia, likely secondary to her obstructive lesion. She was deemed an appropriate candidate for photodynamic therapy (PDT).

## EXAMINATION

Physical examination revealed stable vital signs with no acute distress; however, she became short of breath with conversation. She was obese and appeared older than her stated age. Upon further examination, she had rhonchi and decreased breath sounds on the right, and a soft abdomen, yet cardiopulmonary exam was unremarkable.

## DIAGNOSTIC EVALUATION

A CT scan revealed near-total atelectasis of the right lower lobe due to obstruction of the right lower lobe bronchus. Small scattered pulmonary nodules were present, many of which were new or increased in size. Bronchoscopy with EBUS was performed to evaluate the mediastinal lymph nodes and obtain a tissue biopsy of the endobronchial lesion. The scope was sequentially passed into the left main bronchi, followed by the left upper and lower bronchi. The scope was subsequently advanced into the right main bronchus and then the right upper lobe (RUL), and bronchus intermedius. There was a necrotic endobronchial lesion completely obstructing the entrance to the right middle lobe (RML) and right lower lobe (RLL) in the distal bronchus intermedius (Figure 1, left). The bronchoscope was then switched into EBUS bronchoscope and 7 endobronchial fine needle aspiration (FNA) biopsies were obtained from mediastinal lymph node stations 4R and 10R. These lymph node stations were negative for carcinoma, but chest radiograph confirmed right lower lobe collapse (Figure 1, right).

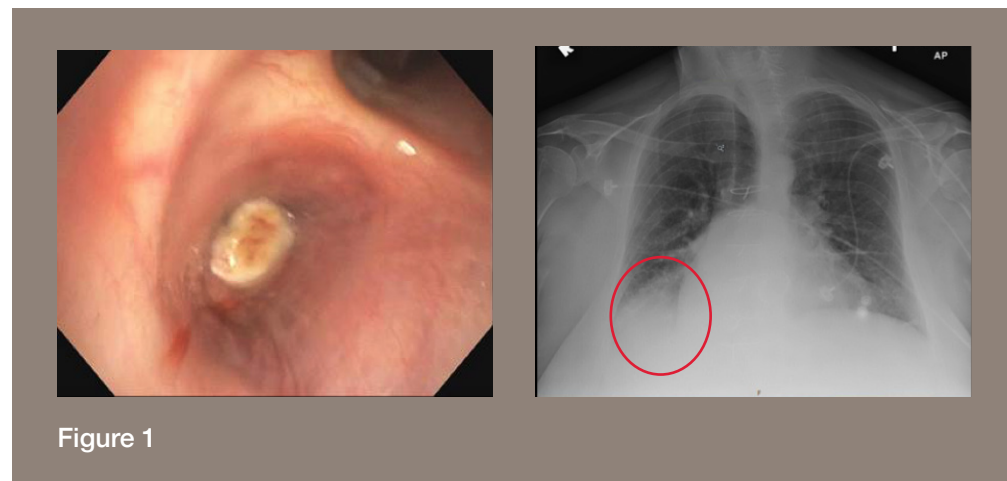


Figure 1

Figure 1 Bronchoscopy (left) and radiography (right) pre-PDT with PHOTOFRIN® (porfimer sodium) for Injection.

## COURSE OF TREATMENT

Due to the patient's significant cardiac comorbidities and poor pulmonary function, she was offered photodynamic therapy (PDT) with PHOTOFRIN® (porfimer sodium) for Injection as a local modality to help improve shortness of breath prior to initiating definitive chemoradiation therapy. The patient received the standard 2 mg/kg of PHOTOFRIN intravenously. Forty-eight hours later, a 2.5-cm diffusing fiber was used to treat the obstructing tumor within the right bronchus intermedius at the energy setting of 200 Joules/cm for a total of 8 minutes with a wavelength of 630 nm  $\pm$  3 nm (Figure 2). Two days later, the same location was re-treated at 200 Joules/cm. Between light applications, the patient underwent endobronchial debridement of tumor.

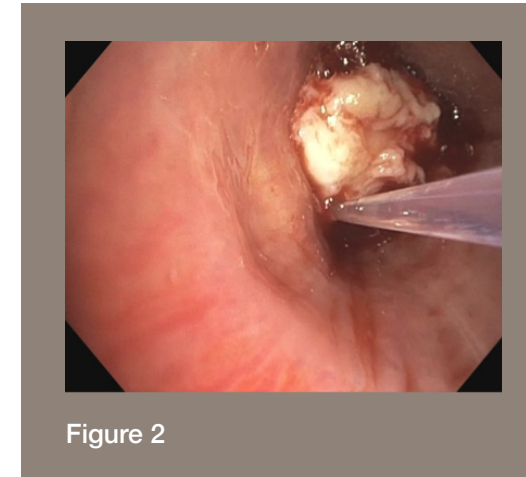
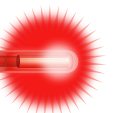


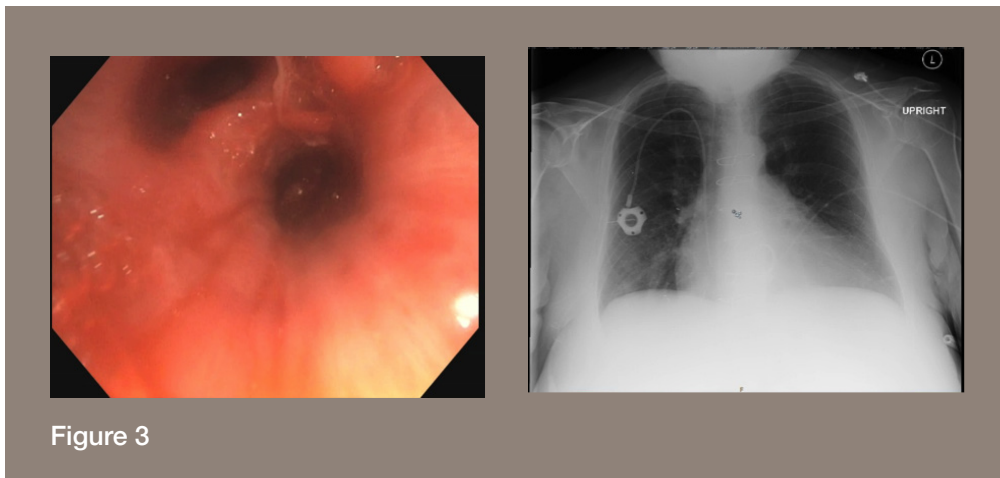
Figure 2

Figure 2 Bronchoscopy with catheter during first PHOTOFRIN® (porfimer sodium) for Injection treatment.



## CLINICAL OUTCOMES

After her second light treatment and debridement, the patient began to notice an improvement in her breathing. Her oxygen requirements improved and she was eventually discharged from the hospital. The bronchoscopic image (Figure 3, left) shows eradication of endobronchial tumor after completion of just 2 treatments. The radiograph (Figure 3, right) shows resolution of right lower lobe collapse post-treatment.



**Figure 3** Bronchoscopy (left) and radiography (right) post-PDT with PHOTOFRIN® (porfimer sodium).

## DISCUSSION

This case study showcased a clinical scenario in which PDT with PHOTOFRIN® (porfimer sodium) for Injection can be used as a local modality for endobronchial lesions in the setting of lobar collapse and post-obstructive pneumonia. This is especially useful in patients who need to be optimized prior to surgery or those who are deemed nonsurgical candidates. It is important to ensure that there is good lung and open airways distal to the obstruction in these patients. Patient selection is the most important step in efficiently and effectively using PDT with PHOTOFRIN to achieve optimal patient outcomes.

The information contained in this case study has been supplied by the medical professional whose name appears here. The advice, opinion, statements, materials and other information expressed and contained in this case study are from the authors and reflect their personal experience with the specific patient. Results may vary. Pinnacle Biologics, Inc. makes no claim that similar treatment will result in a similar outcome.

**Please see accompanying Important Safety Information within sales aid and full Prescribing Information for PHOTOFRIN® (porfimer sodium).**

**FOR MORE INFORMATION ABOUT PHOTOFRIN** visit [www.Photofrin.com](http://www.Photofrin.com) or call Concordia Laboratories Inc. at 1-877-370-1142.

You are encouraged to report negative side effects of prescription drugs to the FDA. Visit [www.fda.gov/medwatch](http://www.fda.gov/medwatch), or call 1-800-FDA-1088.

PHOTOFRIN® (porfimer sodium) and OPTIGUIDE® are registered trademarks of Concordia Laboratories Inc. Pinnacle Biologics™ and the logo of Pinnacle Biologics™ are trademarks of Pinnacle Biologics, Inc. PHOTOFRIN® is manufactured by Jubilant HollisterStier General Partnership for Concordia Laboratories Inc. and distributed in the United States by Pinnacle Biologics, Inc. Concordia Laboratories Inc. St. Michael, Barbados BB11005

See more at: <http://www.photofrin.com/healthcare-professional-home/#sthash.FlnUv0e7.dpuf>.

If there are any questions regarding the information provided, please contact Concordia's Medical Information Department at 1-877-370-1142.

Con/PHO/PM/0006 02/2017  
All rights reserved.

